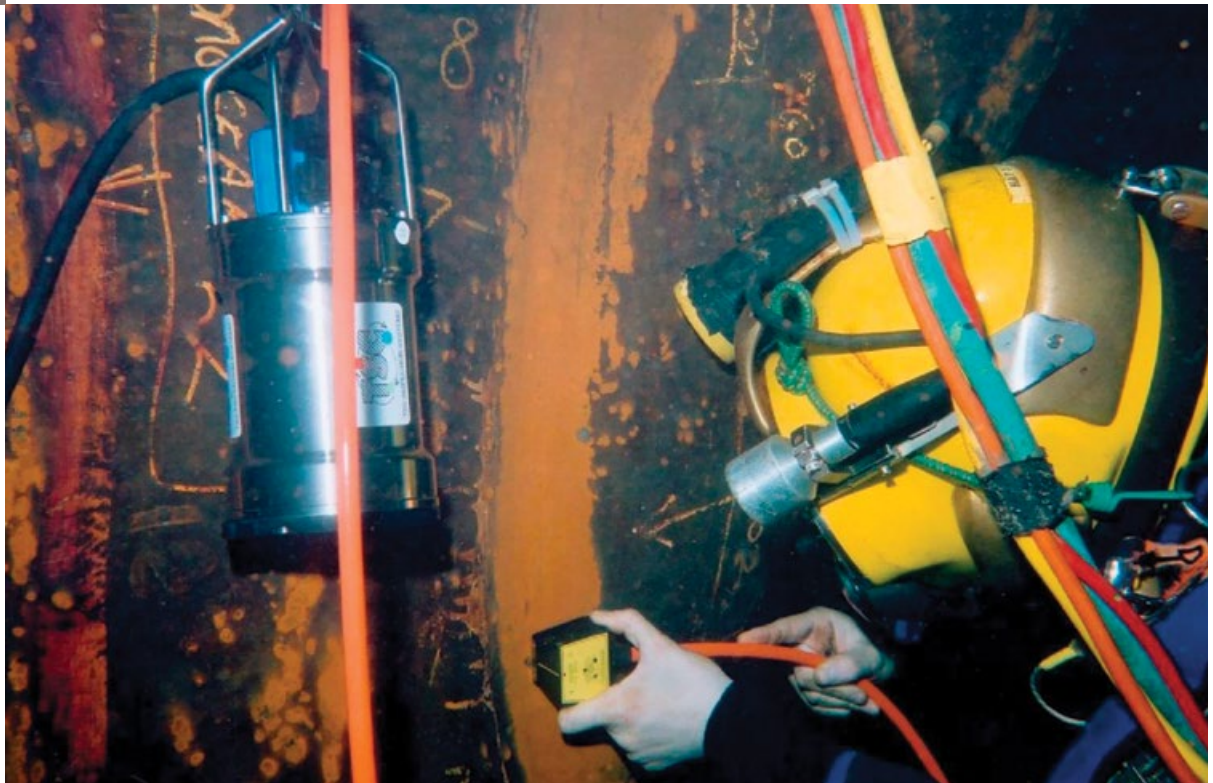


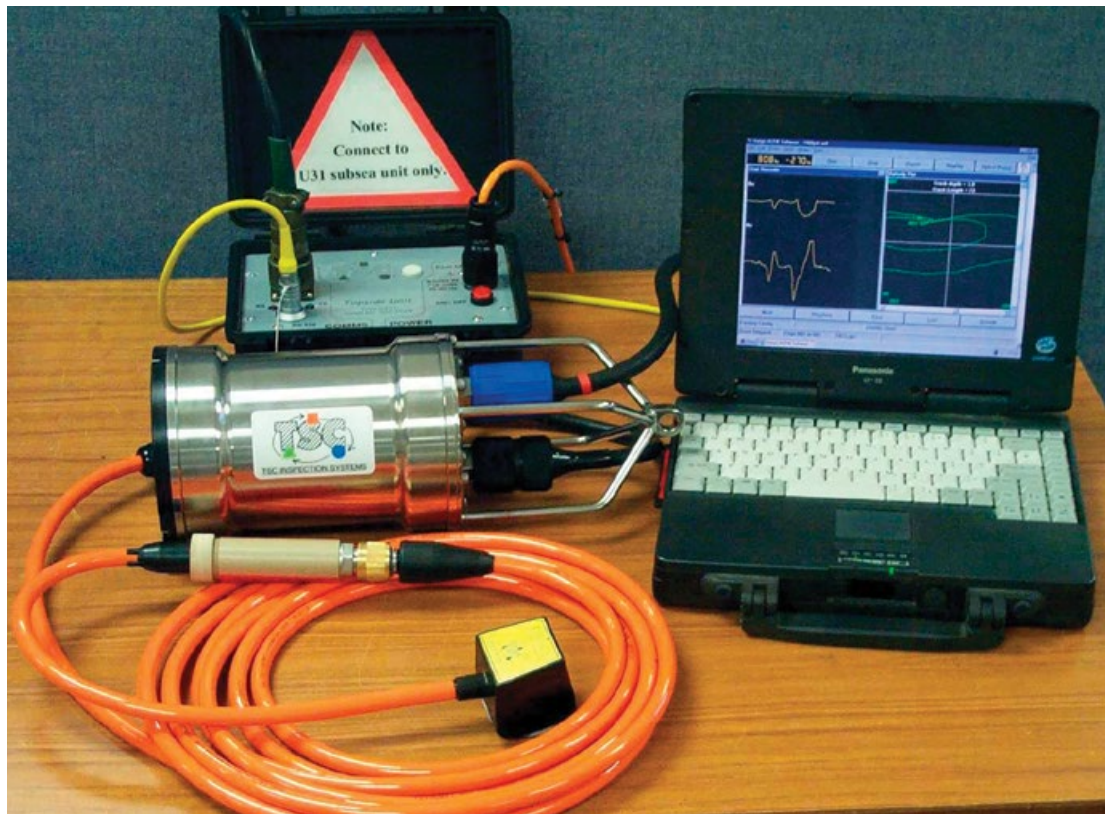
Underwater ACFM System

Subsea Inspection Technology



Key Features

- ⊕ Rapid scanning using a hand-held probe.
- ⊕ Reliable crack detection and sizing (length and depth).
- ⊕ Capable of inspecting corroded surfaces, or through non-conducting coatings several millimetres thick.
- ⊕ Windows software for ease of operation and compatibility with other Windows applications.
- ⊕ Full data storage for back-up, off-line view and audit purposes.
- ⊕ Access to a wide range of geometries using TSC's new range of active subsea probes.
- ⊕ Probes with embedded serial numbers to simplify operation and reduce likelihood of operator error.
- ⊕ Capable of operating at water depths up to 300 m.



Technical Specifications

Title	Value
Optional Probes	TSC U31 Weld Probe, U31 Weld Probe TA 312, U31 Pencil 336, U31 Micro Pencil RA 354, U31 Micro Probe
Probe Cable Length	5 metres standard, up to 50 m by special request.
Serial Communications Cable	5 metres as standard up to 30 metres if required.
Operating Temperature	-20°C to +40°C
Maximum Operating Depth	300 m as standard
ACFM Umbilicals	150 m standard