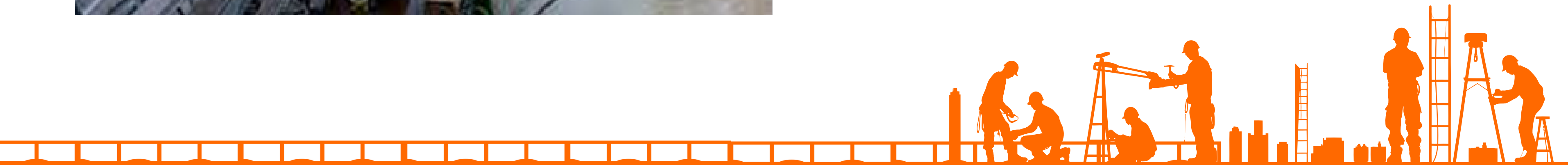


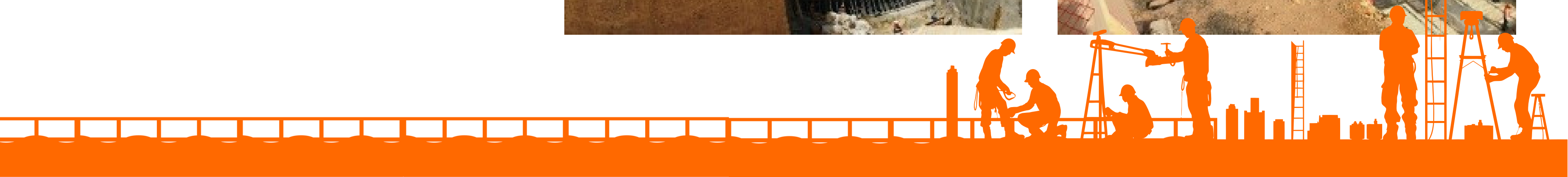
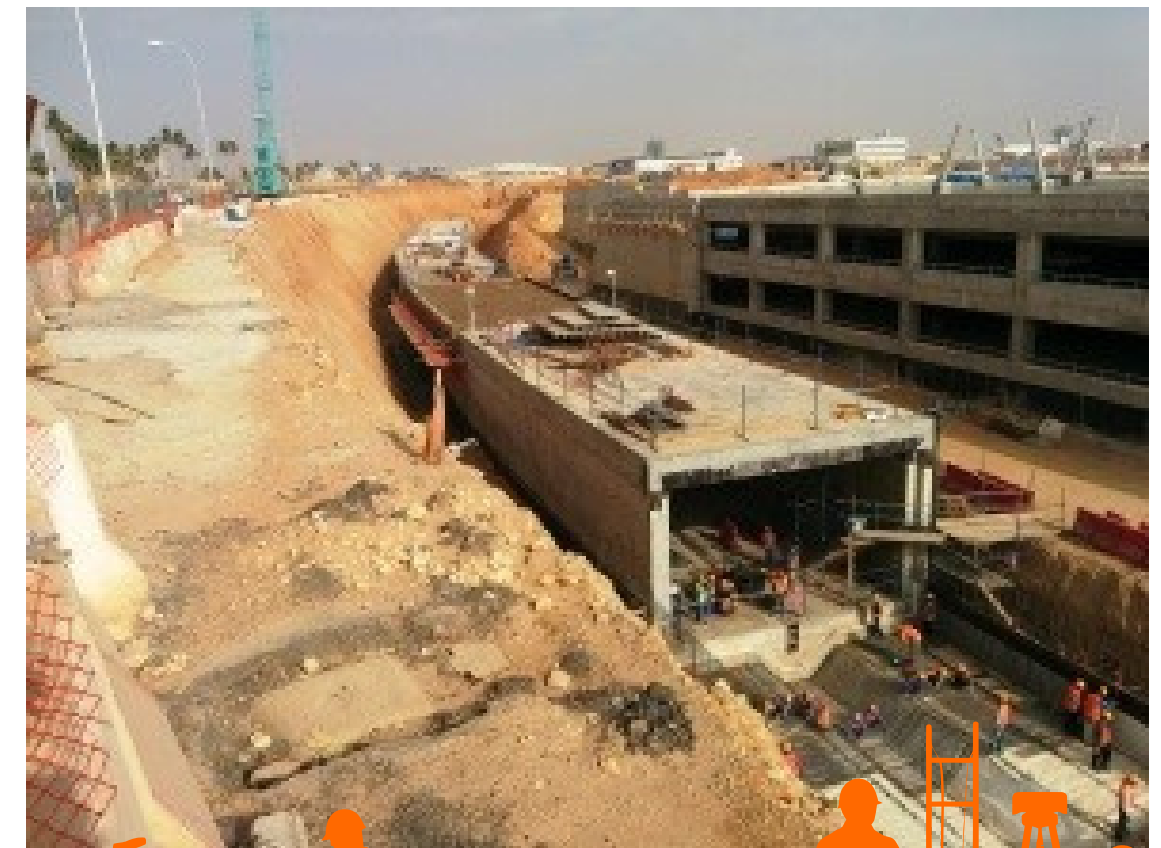


Applus+ Geotechnical Instrumentation and Monitoring projects worldwide



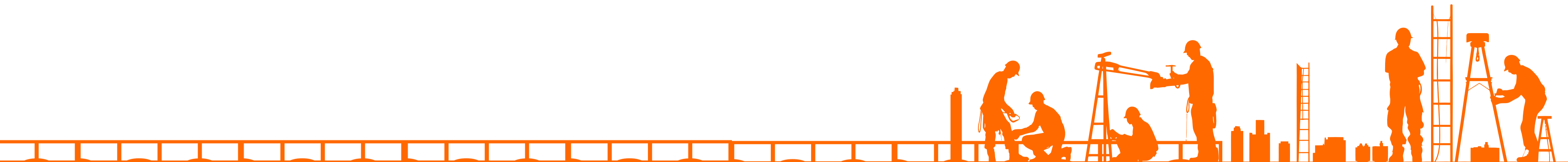
Instrumentation and monitoring of North launching shaft.
5C2 and 4C2 stations and central shaft.
Lot 3

Metro Riyadh Line 5 (SAUDI ARABIA)



Geotechnical Instrumentation and monitoring

Metro Broadway VANCOUVER (CANADA)



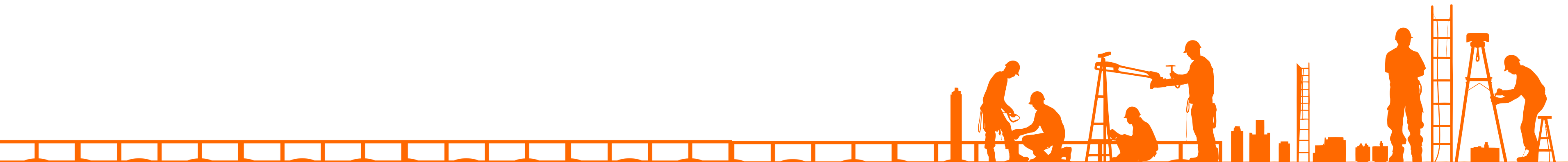
Geotechnical
Instrumentation and
monitoring

Metro Porto Yellow Line (PORTUGAL)



8 stations, 9 emergency shafts and 7.5 km of tunnel

Metro Lima Line 2 (PERU)



Instrumentation and monitoring of the expansion of the Container Terminal

BARCELONA Port (SPAIN)



Contact us to learn more about our Geotechnical Instrumentation and Monitoring services:

info@applus.com

Applus+

Together
beyond
standards

