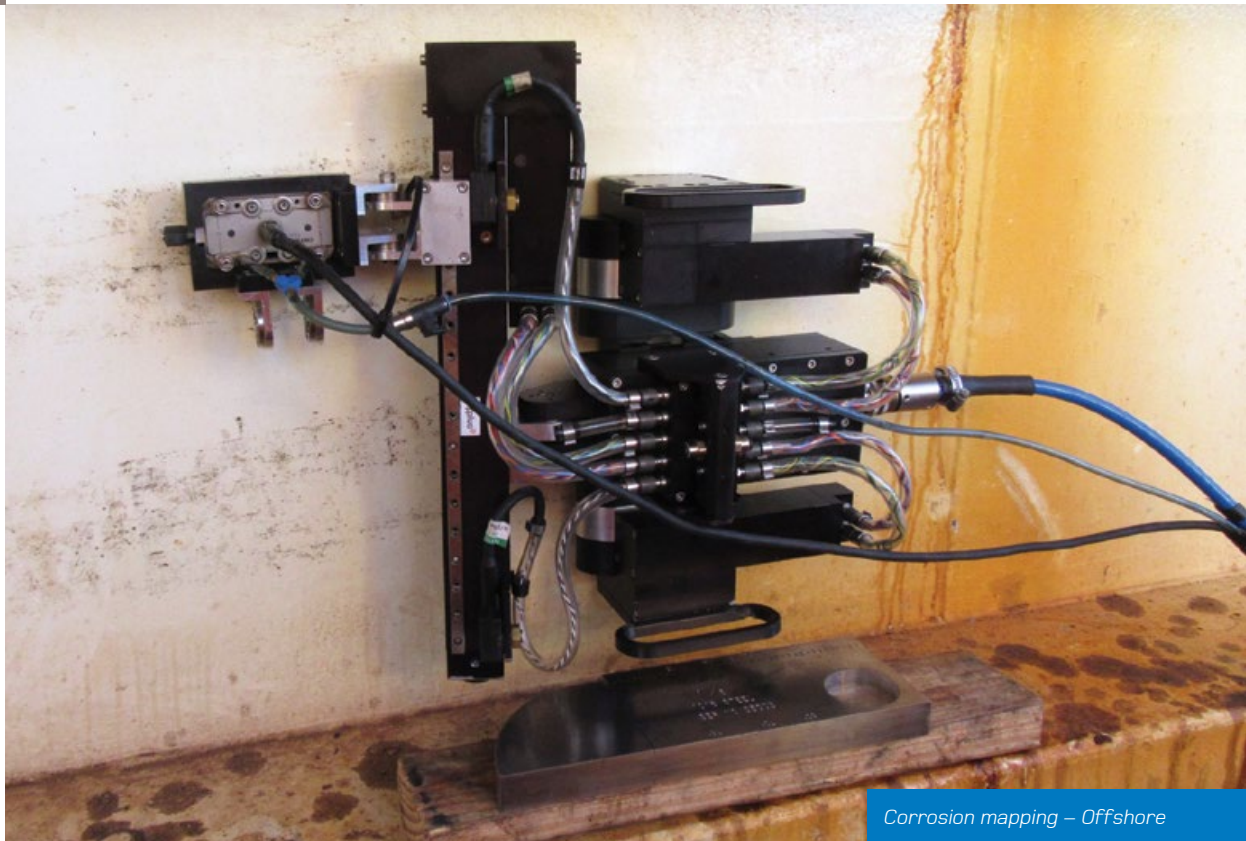


## Automated Universal Scanner (AUS)

### Subsea and Topside Inspection System



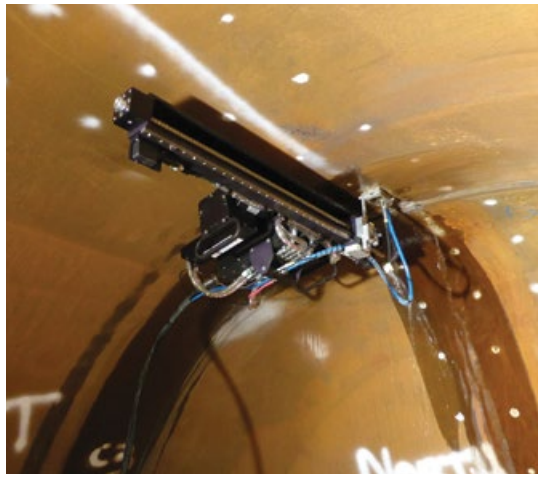
There is an ever increasing need to supply high quality inspection data for piping, vessels and tanks to ascertain the integrity of the asset been inspected. Ultra high resolution imaging to detect and size indications is key to any Risk Based Inspection outcome.

On and above our existing custom built NDT scanners, Applus+ has developed a Multipurpose Automated Universal Scanner (AUS) for Subsea and Topside Inspection Applications

The Automated Universal Scanner can perform single Ultrasonic, Phased Array, ToFD, Laser, Full HD Camera and Eddy Current inspections or a combination of inspection tools through the use of custom built NDT systems.

#### **Applications:**

- ⊕ **Non-intrusive inspection of vessels and tanks.**
- ⊕ **Risers, caissons, conductors.**
- ⊕ **Subsea assets.**
- ⊕ **Piping – coated/uncoated.**
- ⊕ **Welds for pipe and vessels.**
- ⊕ **Visual inspections of inaccessible areas.**
- ⊕ **Ship hulls/ballast tanks.**



### Key Features:

- ⊕ Inspection diameter of piping: 100 mm (4") and up.
- ⊕ Dual motors for steerability and self tracking.
- ⊕ Topside and subsea capable with depth rating of 2000 m.
- ⊕ Diver or ROV deployable.
- ⊕ Various scan length options for various assets.
- ⊕ Battery operated for topside applications.
- ⊕ Joystick controlled for topside applications.
- ⊕ Improved magnetic pull capabilities.
- ⊕ Laser options for tracking.

### Inspection Quality

- ⊕ High Resolution imaging of corrosion (1 mm x 1 mm).
- ⊕ Accurate location of flaws.
- ⊕ Accurate depth and length measures (0.2 mm).
- ⊕ High resolution imaging in color.
- ⊕ 3D mapping capabilities.
- ⊕ Through coating inspection.

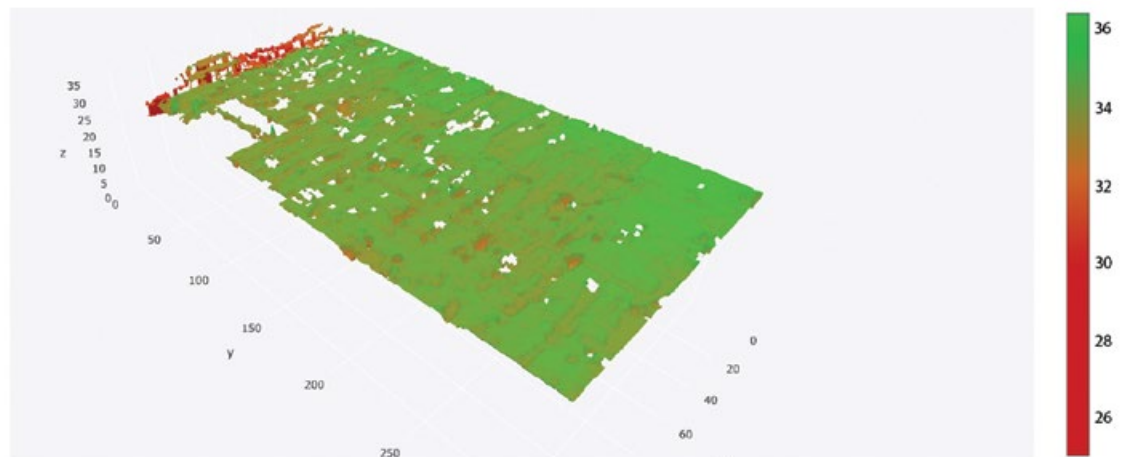
Applus+ provides the following services as individual packages or combined to provide a total Asset Integrity Management programme.

- ⊕ Advanced (non-intrusive) Inspection Services.
- ⊕ Sub-sea Inspection Services.
- ⊕ Engineering Design Solutions.
- ⊕ Risk Based Inspection Planning.
- ⊕ Inspection Management Services.
- ⊕ In Service Inspection.
- ⊕ Plant Life Management.
- ⊕ Metallurgical Services.

Importantly, Applus+ can also call upon extensive in-house expertise and resources for advanced inspection and conventional NDT, providing a total capability for management of plant integrity.

Applus+, in collaboration with our local and international partners, has extensive experience in the application of these services to a wide range of industries including:

- ⊕ Oil & Gas.
- ⊕ Petrochemical.
- ⊕ Refining.
- ⊕ Ore Processing and Handling.
- ⊕ Power Generation.



### Imaging:

High Resolution Data imaging is now possible through in-house built software allowing the end user interactive view on almost any computer without the additional program installations or dependencies.

# Applus<sup>+</sup>

[www.applus.com](http://www.applus.com)

ENERGY AND INDUSTRY DIVISION

Head Office – Perth

94 Discovery Drive, Bibra Lake

Perth, Western Australia 6163

Telephone: +61 8 9410 9300 Facsimile: +61 8 9410 9380

Email: [info.perth@applusrtd.com](mailto:info.perth@applusrtd.com)