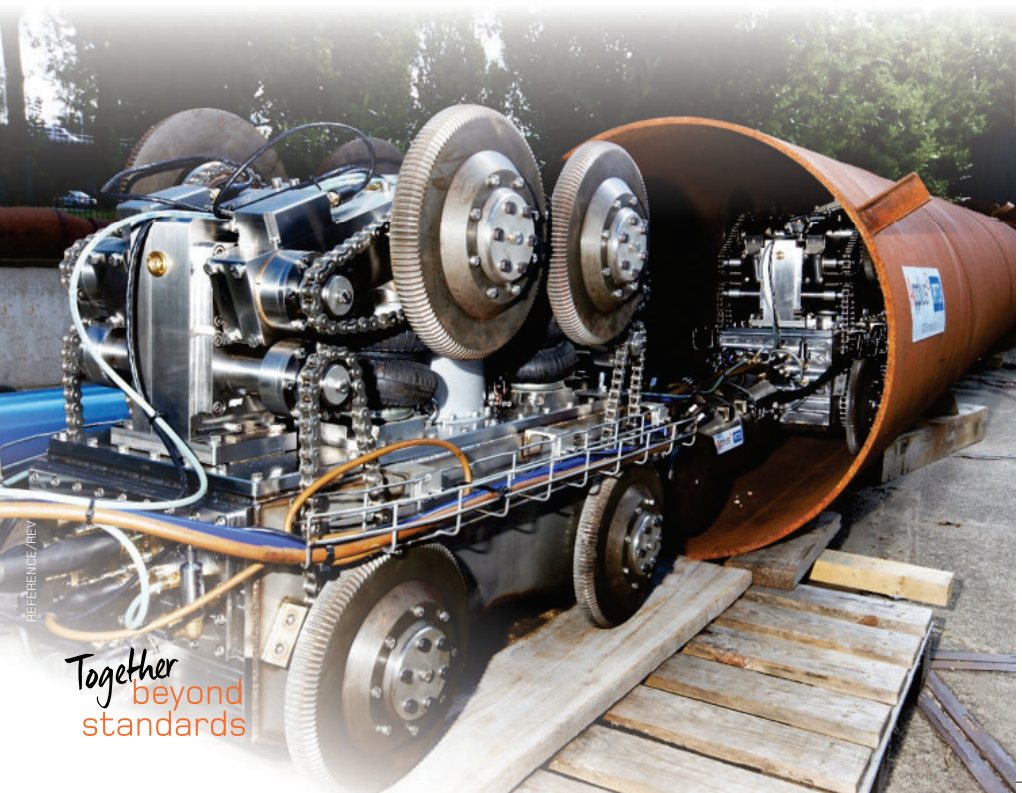


PIT - PIPELINE INSPECTION TOOL

Inspection of pipelines that are
not suitable for standard pigging



REFERENCE/REV

Together
beyond
standards

OVERVIEW

The PIT crawler tool uses ultrasonic measurements to determine the condition of any pipeline. It is a self-propelled crawler and will provide detailed and full coverage measurements of the pipe wall. The system can discriminate between internal and external corrosion. Also metal loss due to mechanical damage or manufacturing can be accurately measured. Beside these, deformations, ovalization, dents, buckles, erosion, laminations type of indications can be clearly identified and measured. The tools can be setup to be able to detect cracks as well.

The PIT system is fitted with a pinger system but can also be fitted with a gyroscopic system to provide XYZ mapping of the pipeline together with the ultrasonic inspection or a video inspection.

During the pipeline inspection the collected data will be transferred to the top-side control room for real-time monitoring. The typical inspection speed is up to 500 meters per hour. At the end of the pipeline, the tool will be put in reverse and drives back to the entrance/starting point. Immediately after the inspection a preliminary report will be presented, already containing the highlights of the inspected pipeline.

APPLICATIONS

- On-shore and off-shore pipelines
- Tank Farm lines
- Loading lines
- Product lines
- Refinery piping
- Road crossings
- River crossings
- Branch lines
- Flow lines
- Slug catchers
- City heating grids
- Water lines
- Casing pipes
- Risers

SOLUTION FOR UNPIGGABLE PIPELINES

- Can inspect pipelines which cannot be inspected by regular systems
- No offshore works required when inspecting loading lines
- Tools can pass 1.5D bends
- No cleaning required
- Only one side access



DATA INTERPRETATION AND ANALYSIS

Immediately after the inspection a preliminary report will be made. This report will be made on site and contains critical information. The final report will be drafted at the PIT department head office in the Netherlands.

All defects will be subject to a B31G MAOP calculation. If necessary, additional assessments can be made, such as:

- Fitness For Service (FFS),
- Corrosion Assessment, Mechanical Damage,
- Manufacturing Metal Loss, Pipe Deformation and Laminations.
- A Pipeline Displacement Strain assessment by XYZ mapping can be performed

SAFETY

All PIT tools are fitted with reinforced umbilical cable for safe and easy retrieval when required.

PROVEN CAPABILITIES AND DEMONSTRATED RESULTS

The in-house developed UT system is capable of making 960 measurements in the pipe circumference every 1.0 mm of axial movement of the tool providing extremely detailed information about the condition of the pipeline. Over 200 PIT projects have been successfully executed across the globe since the 1980s.



OPERATIONAL FLEXIBILITY

- No offshore activities required when inspection loading lines
- Access to the pipeline is required at one point only. Tool will be launched and received at this point.
- No liquid pumping/handling/storage required during the inspection because tool is self-propelled

CUSTOMIZED SOLUTIONS

We've been the industry's specialist in non-destructive testing, inspection and certification since 1937. Providing both standard and tailor-made solutions, we're committed to ensuring the quality and efficiency of your assets.



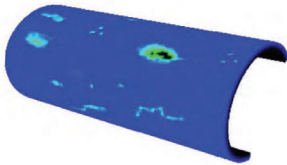
Related Services



RTD DTI Trekscan



Guided Wave Ultrasonics



3D Laser Mapping



Magnetic Flux Leakage

As a **Global leader**, we have the technology, human capabilities and resources to meet the demands of industry. No matter the size, scale or scope of the work, we always go beyond standards by delivering operational excellence with local knowledge and global competence.

We are dynamic organisation; problem-solvers by nature. Where there is no existing answer to a challenge or problem, we will use our vast experience and in-depth knowledge to find one. By working closely with our clients, we have become a **Trusted partner** who delivers new, innovative solutions with highest of integrity.

A **Passion for improvement** drives our teams to safeguard client operations while delivering our services. We innovate to bring about advances in operational safety and this commitment to excellence is what makes us renowned as one of the best.

Together Beyond Standards

Together
beyond
standards

Europe

T +31 10 716 6000
T +34 912 080 800
E info.netherlands@applusrtd.com
E info@applus.com

North America

T +1 832 295 5023
E info.usa@applus.com
E info.canada@applus.com

Latin America

T +57 1 744 11
E info.latam@applusnorcontrol.com

Asia Pacific

T +61 8 9410 9300
E info.bla@applus.com

Middle East & Africa

T +27 16 422 4930
E info@applus.com